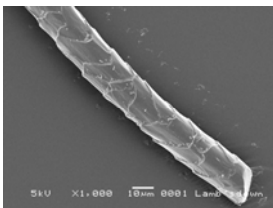


What is Superfine Wool ? How fine it is ?

Superfine wool is a unique luxury fibre that meets all of the demands of elegant, casual and tailored wear for men, women & babies. Owing to the fineness, it also provides the right combination of softness, comfort and performance in fine knitwear. Generally, finer wool produces a softer hand and a more luxurious garment.

In order to identify the fineness of wool fibers, many wool products are now labeled as 'Super 80s,' 'Super 90s,' or such designation through 'Super 250s.' In 2006, the International Wool Textile Organization (IWTO) finalised the definitions that codify the maximum fibre diameters each level of 'Super' designation should contain.

Recently, the United States congress has approved amendment to the Wool Products Labeling Act of 1939 - Wool Suit Fabric Labeling Fairness and International Standards Conforming Act. The purpose of this amendment is to revise the labeling requirements for certain wool and cashmere products manufactured on or after January 1, 2007



The Wool Suit Fabric Labeling Fairness and International Standards Conforming Act corresponds with the "Super S" code of practice adopted by IWTO.

The Act gives clear definition of the fineness limits of each category of superfine wool and protects consumers from deceptively-labeled wool products by establishing a legal standard.

Please also read to our SafeGuards 009/07 dated February 2007 « *Is your Cashmere label legally correct ?* »

http://newsletter.sgs.com/eNewsletterPro/uploadedimages/000006/SafeGuards_00907_Cashmere.pdf

Further detail can be found from the table below:

<i>Codified Designations of Superfine wool</i>	<i>Corresponding mean fiber diameter</i>
'Super 80's' or '80's'	19.75 microns or finer
'Super 90's' or '90's'	19.25 microns or finer
'Super 100's' or '100's'	18.75 microns or finer
'Super 110's' or '110's'	18.25 microns or finer
'Super 120's' or '120's'	17.75 microns or finer
'Super 130's' or '130's'	17.25 microns or finer
'Super 140's' or '140's'	16.75 microns or finer
'Super 150's' or '150's'	16.25 microns or finer
'Super 160's' or '160's'	15.75 microns or finer
'Super 170's' or '170's'	15.25 microns or finer
'Super 180's' or '180's'	14.75 microns or finer
'Super 190's' or '190's'	14.25 microns or finer
'Super 200s' or '200s'	13.75 microns or finer
'Super 210s' or '210s'	13.25 microns or finer
'Super 220s' or '220s'	12.75 microns or finer
'Super 230s' or '230s'	12.25 microns or finer
'Super 240s' or '240s'	11.75 microns or finer
'Super 250s' or '250s'	11.25 microns or finer

The newly-established labeling regulation will benefit both consumers and manufacturers. Consumers can use the "Super" grade as a quality indicator during purchase, and manufacturers can avoid potential violation or recall by using the correct labeling.

Tests to verify compliance should only be carried out by qualified laboratories.

Both the *Cashmere and Camel Hair Manufacturers Institute (CCMI)* and *IWTO* publish lists of appropriately-qualified labs on their websites. The tests that must be used to determine Mean Fibre Diameter values can be performed using projection microscope (IWTO -8 or ASTM D2130) on wool or wool blend fabrics, or Laserscan (IWTO-12 or ASTM D6544) on pure wool fabrics. **SGS can provide such services through its Cashmere Labs in Shanghai, Hong Kong, and Bradford, or Wool Testing Services laboratory in Wellington, New Zealand.**

For enquiries:

Global Competences Support Centre, gcsc@sgs.com
 US – Louann Spirito, ☎ +973 575 5252 or ✉: Louann.spirito@sgs.com
 HK – Ruth Hon, ☎ +852 2774 7148 or ✉: cashmere.hongkong@sgs.com
 UK – Liqin Zhang, ☎ +44 1274 760 400 or ✉: cashmere.europe@sgs.com
 CN – Flora Wang, ☎ +86 21 61402666 or ✉: cashmere.china@sgs.com

Asia – Hong Kong Tel: +852 2334 4481 Fax: +852 2144 7001 ✉ mktg.hk@sgs.com
 Australasia – Perth Tel: +61 (0) 3 9790 3418 Fax: +61 (0) 3 9701 0988 ✉ au.cts@sgs.com
 Europe – London, UK Tel: +44(0) 20 8991 3410 Fax: +44 (0) 20 8991 3417 ✉ gb.cts.sales@sgs.com
 Africa & Middle East – Turkey. Tel: +90 212 225 0024 Fax: +90 212 296 47 82 ✉ sgs.turkey@sgs.com
 Americas – USA. Tel: +1 973 575 5252 Fax: +1 973 575 1193 ✉ Marketing.CTS.US@sgs.com
 Web: www.sgs.com Global Competences Support Centre: ✉ gcsc@sgs.com
 If you wish to unsubscribe to this technical bulletin, go here: [Unsubscribe](#)

© 2007 SGS. All rights reserved. This is a publication of SGS, except for 3rd parties' contents submitted or licensed for use by SGS. SGS neither endorses nor disapproves said 3rd parties contents. This publication is intended to provide technical information and shall not be considered an exhaustive treatment of any subject treated. It is strictly educational and does not replace any legal requirements or applicable regulations. It is not intended to constitute consulting or professional advice. The information contained herein is provided "as is" and SGS does not warrant that it will be error-free or will meet any particular criteria of performance or quality. Do not quote or refer any information herein without SGS's prior written consent.